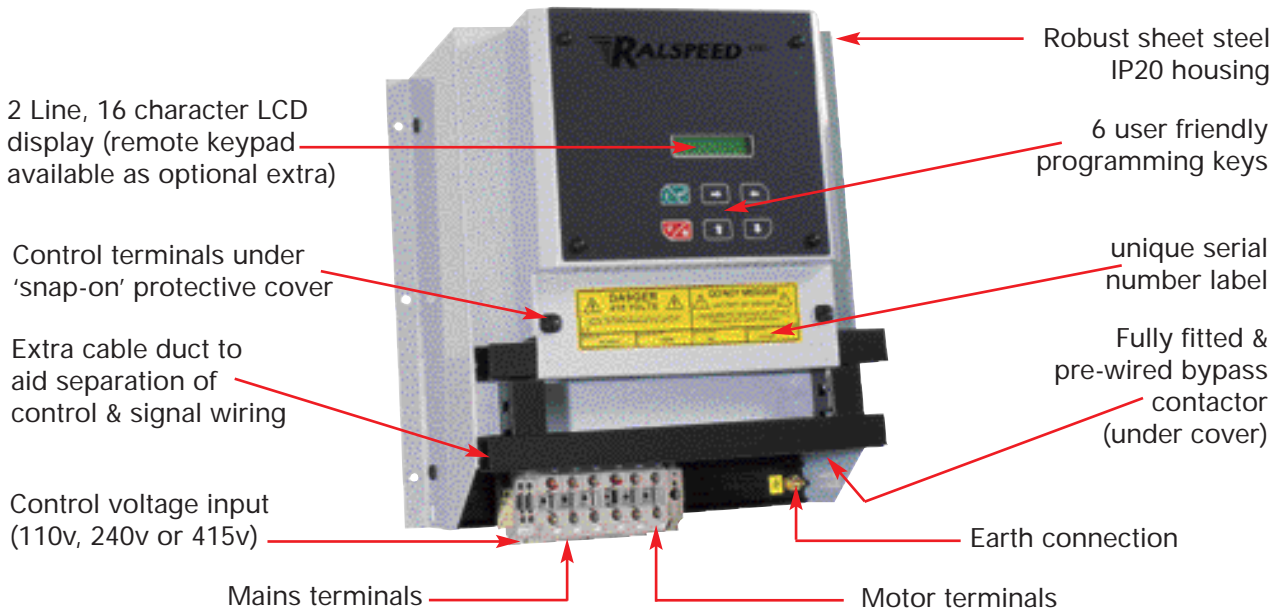


TQM2KB-11 to TQM2KB-55

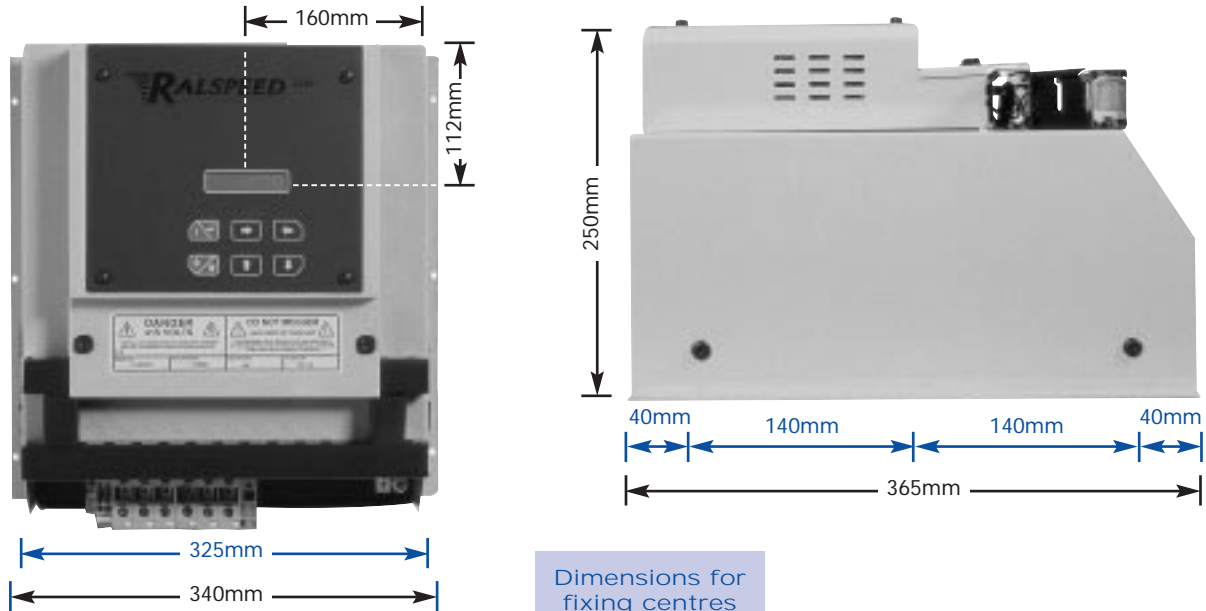
IP20 chassis version soft start unit for bypass duty, contactor to be supplied and fitted by Ralspeed



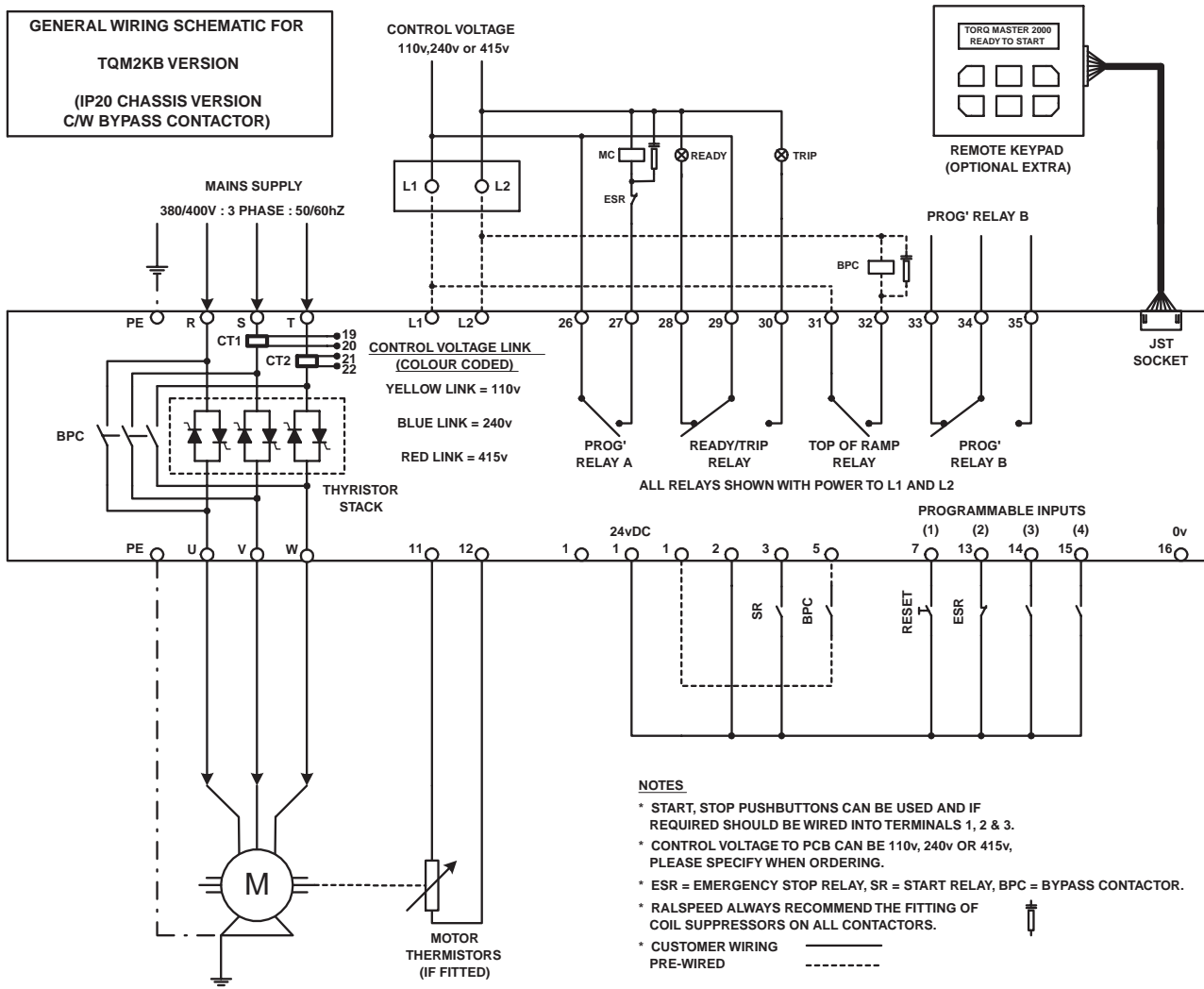
| Technical Data | Ratings | | | | | | | |
|--|---|----|----|----|----|----|-----|--|
| KW rating | 11 | 15 | 22 | 30 | 37 | 45 | 55 | |
| Mains power (R, S, T) | 110vAC to 415vAC +10%-10% (690v available as standard option) | | | | | | | |
| Current rating (Amps) at 380v | 22 | 30 | 44 | 60 | 72 | 85 | 105 | |
| Control supply L1 & L2 (on PCB) | 110v / 220v / 440v User selectable and fully fused | | | | | | | |
| Accel / Decel time – (Voltage ramp) | 1 to 240 seconds independently adjustable | | | | | | | |
| Current limitation details | Max current limit 600% of full load current Ramp to limit 1-10 sec, Current time out 10-60 sec | | | | | | | |
| Starting torque | 25% to 70% of mains voltage – 5% steps | | | | | | | |
| Stopping torque | 25% to 100% of mains voltage – 5% steps | | | | | | | |
| Torque boost (kick start) | 70% of mains voltage adjustable from 200ms to 2sec | | | | | | | |
| Max switching cycle | 12 even starts per hour with override in engineers menu | | | | | | | |
| Dimensions H x W x D (in mm) | 365 x 340 x 250 | | | | | | | |
| Weights Kg (approximately & unpacked) | 10 | 10 | 10 | 10 | 15 | 15 | 15 | |
| Power Terminals | 10 | 10 | 16 | 35 | 35 | 35 | 35 | |
| Ambient / Storage temperature | 0°C 45°C / -22°C 75°C | | | | | | | |
| Programmable Relays | Overload, Underload, Thermistor, Service Over, Phase Fault, Firing Fault, External Trip, Overload Pre-alarm, Shearpin, Too many starts, Brake time over & Top of ramp | | | | | | | |
| Programmable Inputs | Inch, Reset Run Hours, External Trip, Brake Stop, Ramp Hold, Start Delay, Soft Stop, Local/Remote, Em Stop, Reset & Heatsink over Temperature | | | | | | | |
| Protection | Electronic Overload with 5 Selectable Curves, Underload, Thermistor Trip Circuit, Phase Fault, Thyristor Fault, Overload Pre-Alarm Too many starts, Emergency stop input & electronic "Shearpin" | | | | | | | |
| Information Screens | Motor Running - Time & Date, Ambient Temperature, Motor Amps (both digital & bar graph), 1000 Event Data-log (Downloadable), Service Interval & Run Hours | | | | | | | |

Note: Due to continuous improvement & development, sizes & specification may change without notice - always check with factory before ordering.

TQM2KB-11 to TQM2KB-55

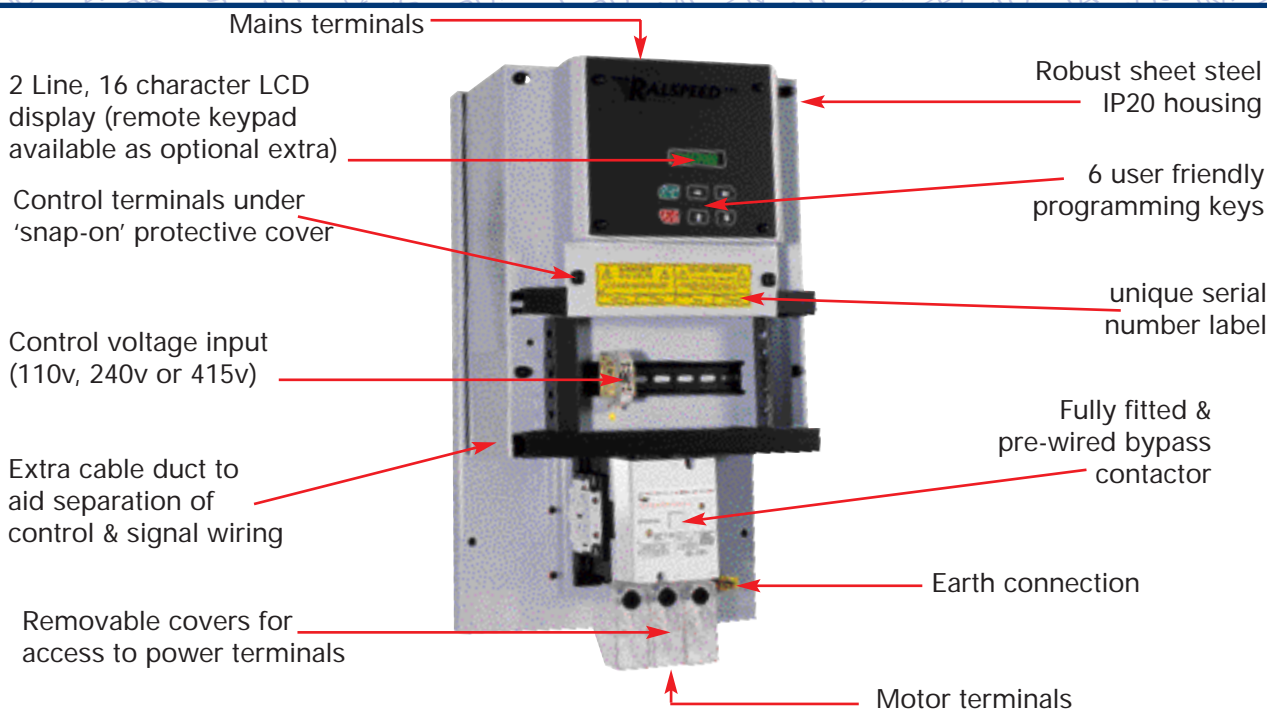


Dimensions for fixing centres
(blue text)



TQM2KB-75 to TQM2KB-110

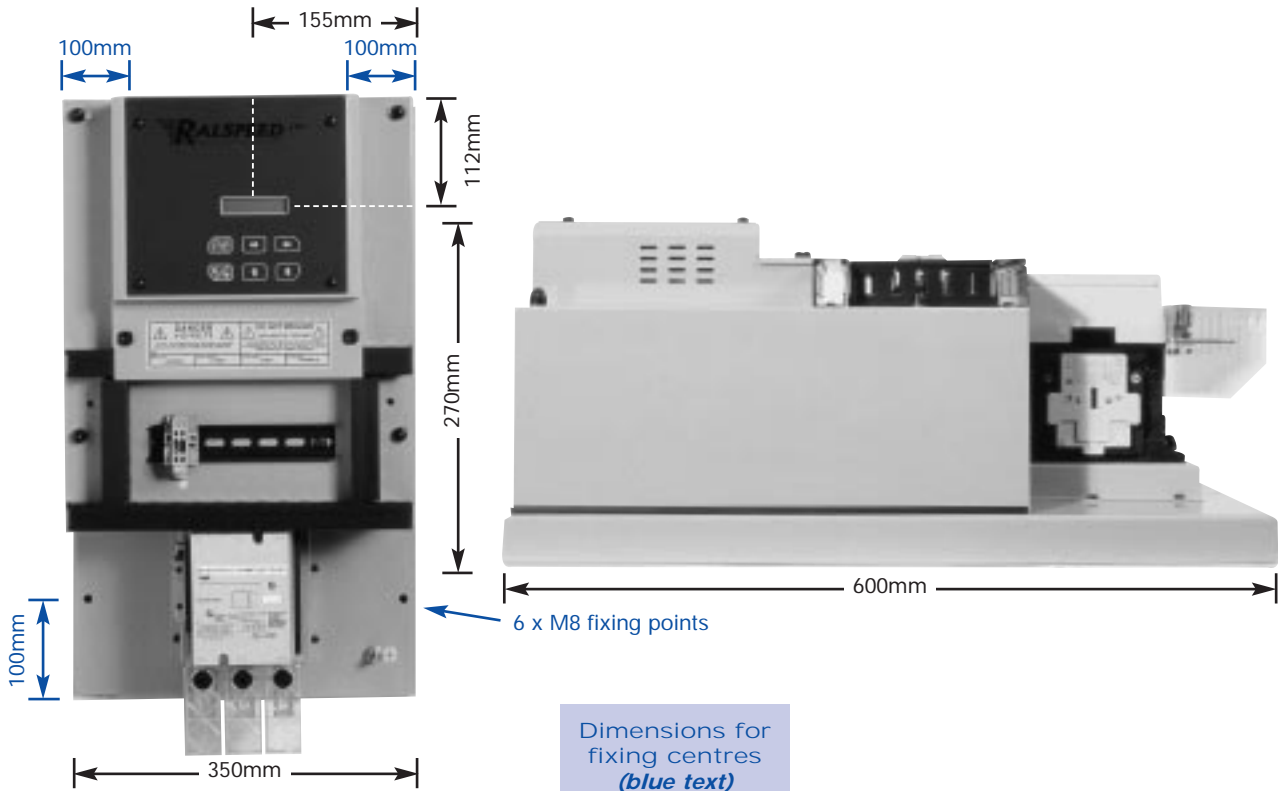
IP20 chassis version soft start unit for bypass duty, contactor to be supplied and fitted by Ralspeed



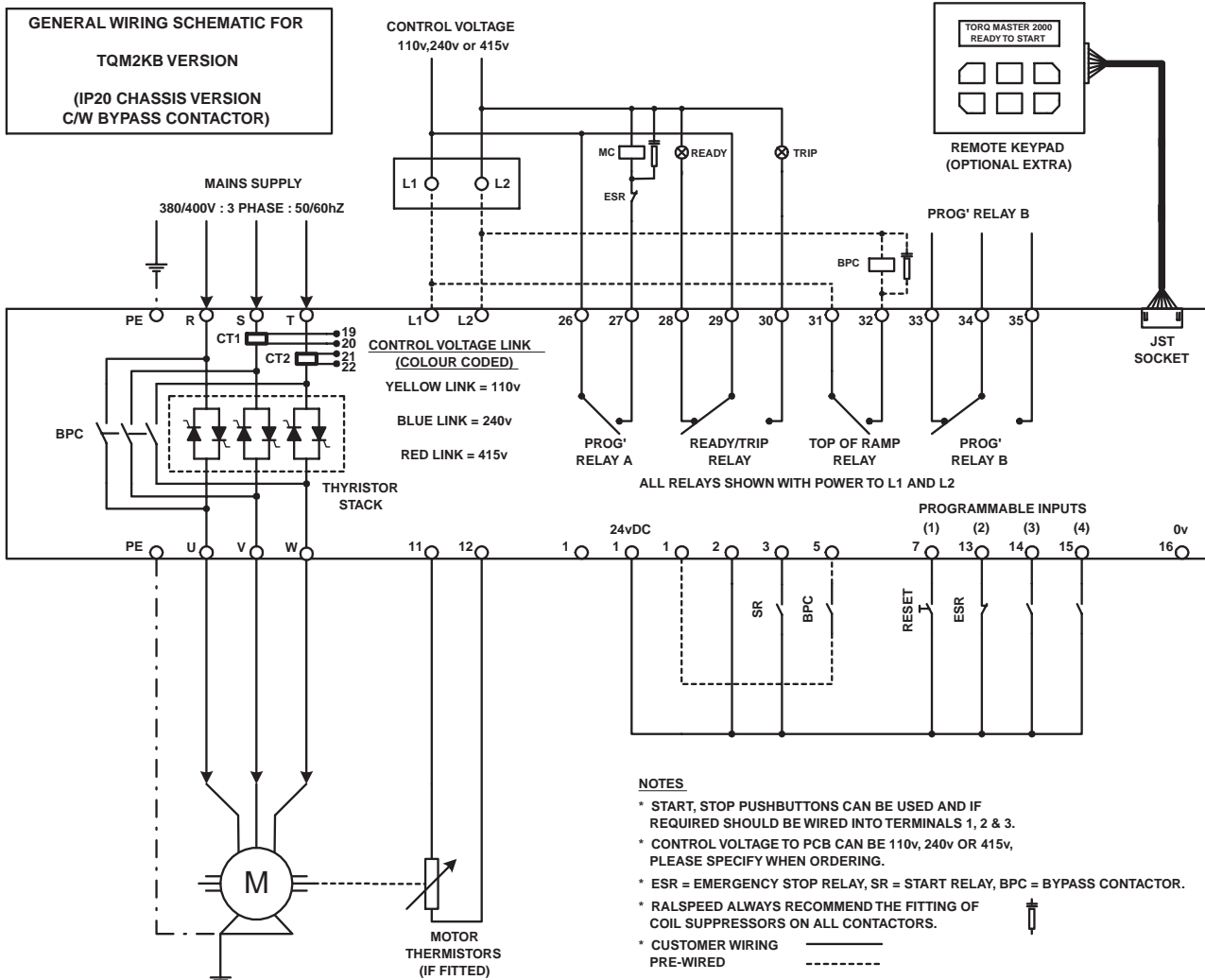
| Technical Data | Ratings | | |
|--|---|-----|-----|
| KW rating | 75 | 90 | 110 |
| Mains power (R, S, T) | 110vAC to 415vAC +10%-10% (690v available as standard option) | | |
| Current rating (Amps) at 380v | 138 | 170 | 205 |
| Control supply L1 & L2 (on PCB) | 110v / 220v / 440v User selectable and fully fused | | |
| Accel / Decel time – (Voltage ramp) | 1 to 240 seconds independently adjustable | | |
| Current limitation details | Max current limit 600% of full load current Ramp to limit 1-10 sec, Current time out 10-60 sec | | |
| Starting torque | 25% to 70% of mains voltage – 5% steps | | |
| Stopping torque | 25% to 100% of mains voltage – 5% steps | | |
| Torque boost (kick start) | 70% of mains voltage adjustable from 200ms to 2sec | | |
| Max switching cycle | 12 even starts per hour with override in engineers menu | | |
| Dimensions H x W x D (in mm) | 600 x 350 x 270 | | |
| Weights Kg (approximately & unpacked) | 30 | 30 | 30 |
| Power Terminals - (hole size in sq mm) | 8 | 8 | 8 |
| Ambient / Storage temperature | 0°C 45°C / -22°C 75°C | | |
| Programmable Relays | Overload, Underload, Thermistor, Service Over, Phase Fault, Firing Fault, External Trip, Overload Pre-alarm, Shearpin, Too many starts, Brake time over & Top of ramp | | |
| Programmable Inputs | Inch, Reset Run Hours, External Trip, Brake Stop, Ramp Hold, Start Delay, Soft Stop, Local/Remote, Em Stop, Reset & Heatsink over Temperature | | |
| Protection | Electronic Overload with 5 Selectable Curves, Underload, Thermistor Trip Circuit, Phase Fault, Thyristor Fault, Overload Pre-Alarm Too many starts, Emergency stop input & electronic "Shearpin" | | |
| Information Screens | Motor Running - Time & Date, Ambient Temperature, Motor Amps (both digital & bar graph), 1000 Event Data-log (Downloadable), Service Interval & Run Hours | | |

Note: Due to continuous improvement & development, sizes & specification may change without notice - always check with factory before ordering.

TQM2KB-75 to TQM2KB-110



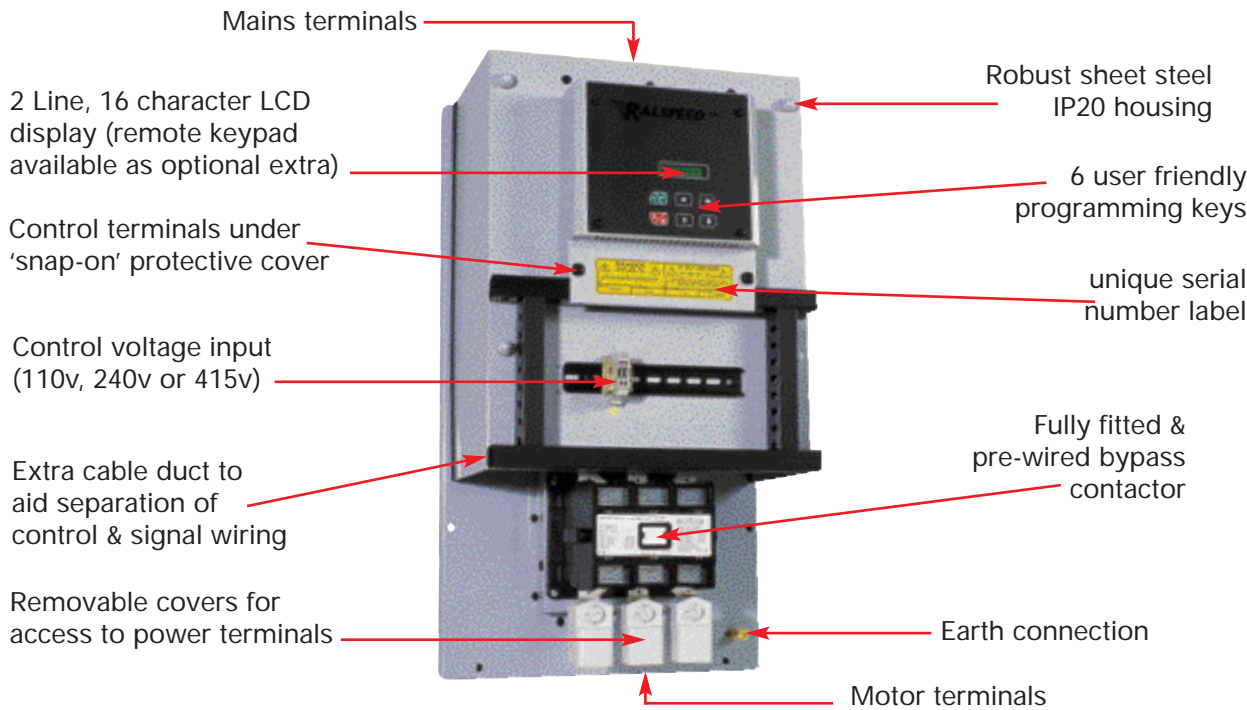
**GENERAL WIRING SCHEMATIC FOR
TQM2KB VERSION
(IP20 CHASSIS VERSION
C/W BYPASS CONTACTOR)**



- NOTES**
- * START, STOP PUSHBUTTONS CAN BE USED AND IF REQUIRED SHOULD BE WIRED INTO TERMINALS 1, 2 & 3.
 - * CONTROL VOLTAGE TO PCB CAN BE 110v, 240v OR 415v, PLEASE SPECIFY WHEN ORDERING.
 - * ESR = EMERGENCY STOP RELAY, SR = START RELAY, BPC = BYPASS CONTACTOR.
 - * RALSPEED ALWAYS RECOMMEND THE FITTING OF COIL SUPPRESSORS ON ALL CONTACTORS.
 - * CUSTOMER WIRING PRE-WIRED

TQM2KB-132 to TQM2KB-250

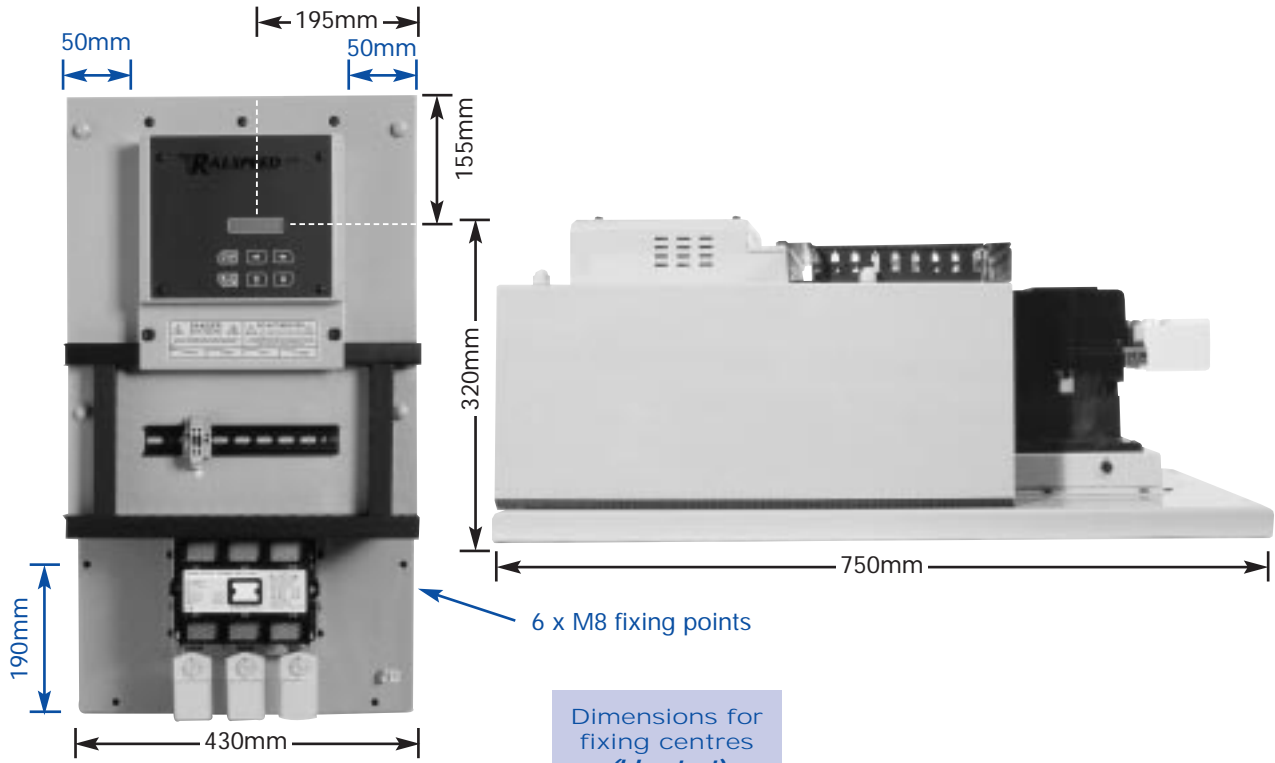
IP20 chassis version soft start unit for bypass duty, contactor to be supplied and fitted by Ralspeed



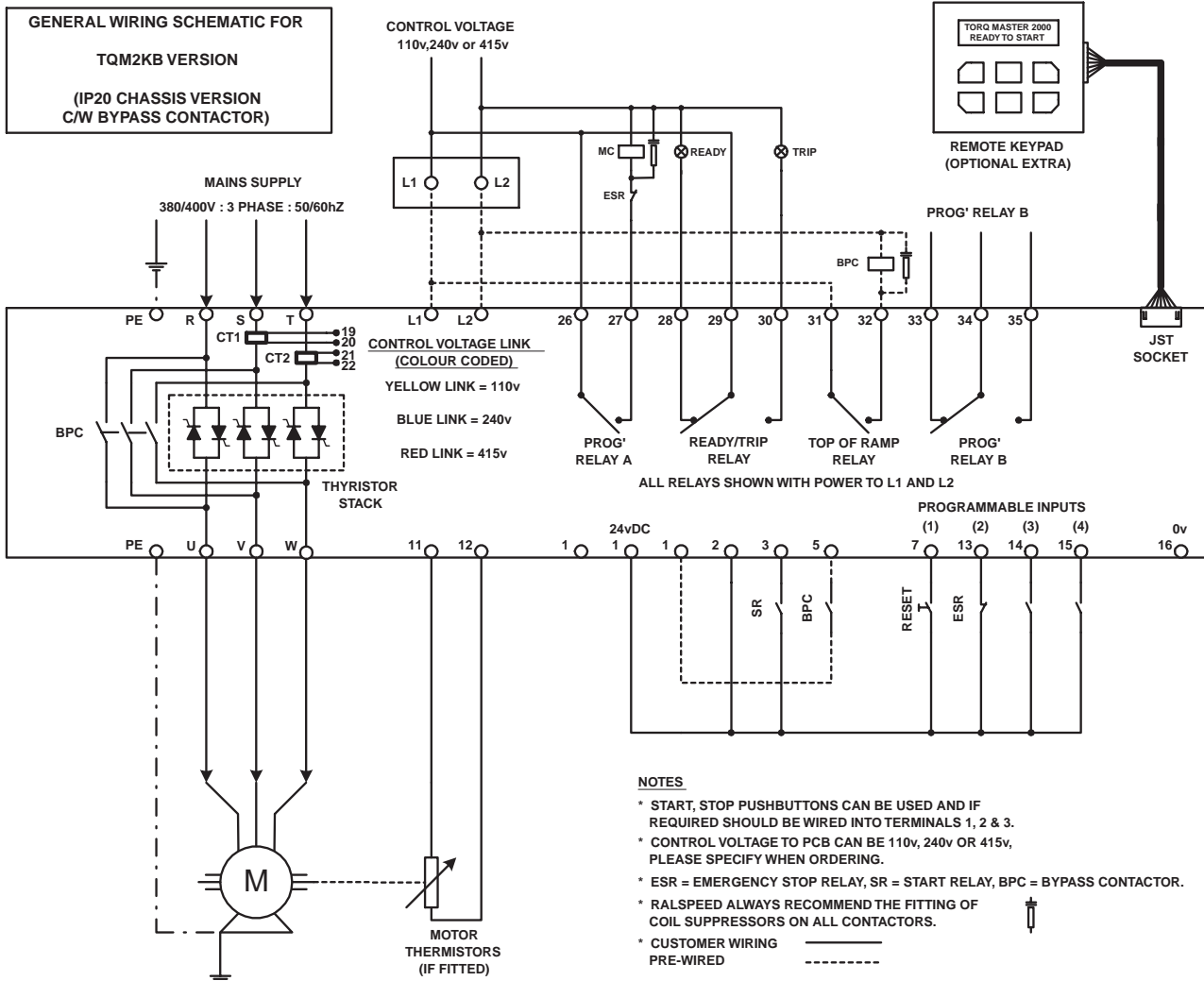
| Technical Data | Ratings | | | | |
|--|---|-----|-----|-----|-----|
| KW rating | 132 | 160 | 186 | 225 | 250 |
| Mains power (R, S, T) | 110vAC to 415vAC +10%-10% (690v available as standard option) | | | | |
| Current rating (Amps) at 380v | 245 | 300 | 342 | 408 | 460 |
| Control supply L1 & L2 (on PCB) | 110v / 220v / 440v User selectable and fully fused | | | | |
| Accel / Decel time – (Voltage ramp) | 1 to 240 seconds independently adjustable | | | | |
| Current limitation details | Max current limit 600% of full load current Ramp to limit 1-10 sec, Current time out 10-60 sec | | | | |
| Starting torque | 25% to 70% of mains voltage – 5% steps | | | | |
| Stopping torque | 25% to 100% of mains voltage – 5% steps | | | | |
| Torque boost (kick start) | 70% of mains voltage adjustable from 200ms to 2sec | | | | |
| Max switching cycle | 12 even starts per hour with override in engineering menu | | | | |
| Dimensions H x W x D (in mm) | 750 x 430 x 320 | | | | |
| Weights Kg (approximately & unpacked) | 35 | 35 | 35 | 35 | 35 |
| Power Terminals - (hole size in sq mm) | 10 | 10 | 10 | 10 | 10 |
| Ambient / Storage temperature | 0°C 45°C / -22°C 75°C | | | | |
| Programmable Relays | Overload, Underload, Thermistor, Service Over, Phase Fault, Firing Fault, External Trip, Overload Pre-alarm, Shearpin, Too many starts, Brake time over & Top of ramp | | | | |
| Programmable Inputs | Inch, Reset Run Hours, External Trip, Brake Stop, Ramp Hold, Start Delay, Soft Stop, Local/Remote, Em Stop, Reset & Heatsink over Temperature | | | | |
| Protection | Electronic Overload with 5 Selectable Curves, Underload, Thermistor Trip Circuit, Phase Fault, Thyristor Fault, Overload Pre-Alarm Too many starts, Emergency stop input & electronic "Shearpin" | | | | |
| Information Screens | Motor Running - Time & Date, Ambient Temperature, Motor Amps (both digital & bar graph), 1000 Event Data-log (Downloadable), Service Interval & Run Hours | | | | |

Note: Due to continuous improvement & development, sizes & specification may change without notice - always check with factory before ordering.

TQM2KB-132 to TQM2KB-250



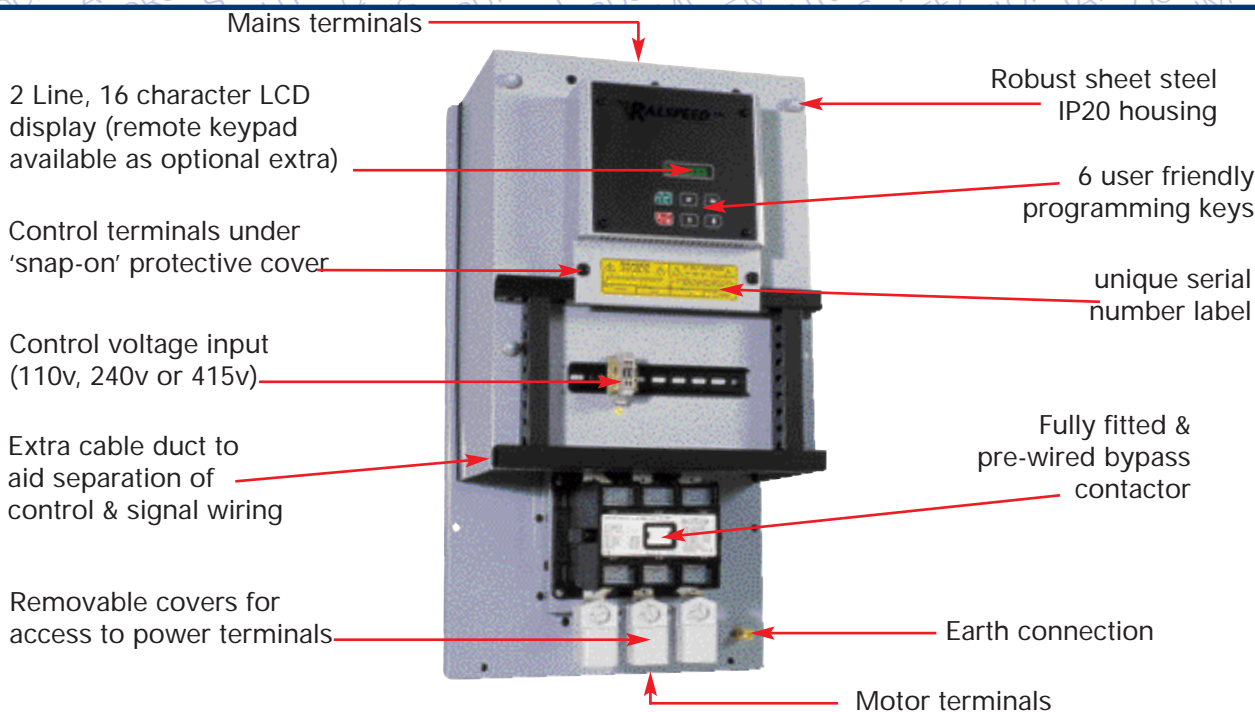
GENERAL WIRING SCHEMATIC FOR TQM2KB VERSION (IP20 CHASSIS VERSION C/W BYPASS CONTACTOR)



Tel: 00 44 (0)1254 582 345 Fax: 00 44 (0)1254 668 414
www.ralspeed.com

TQM2KB-280 to TQM2KB-500

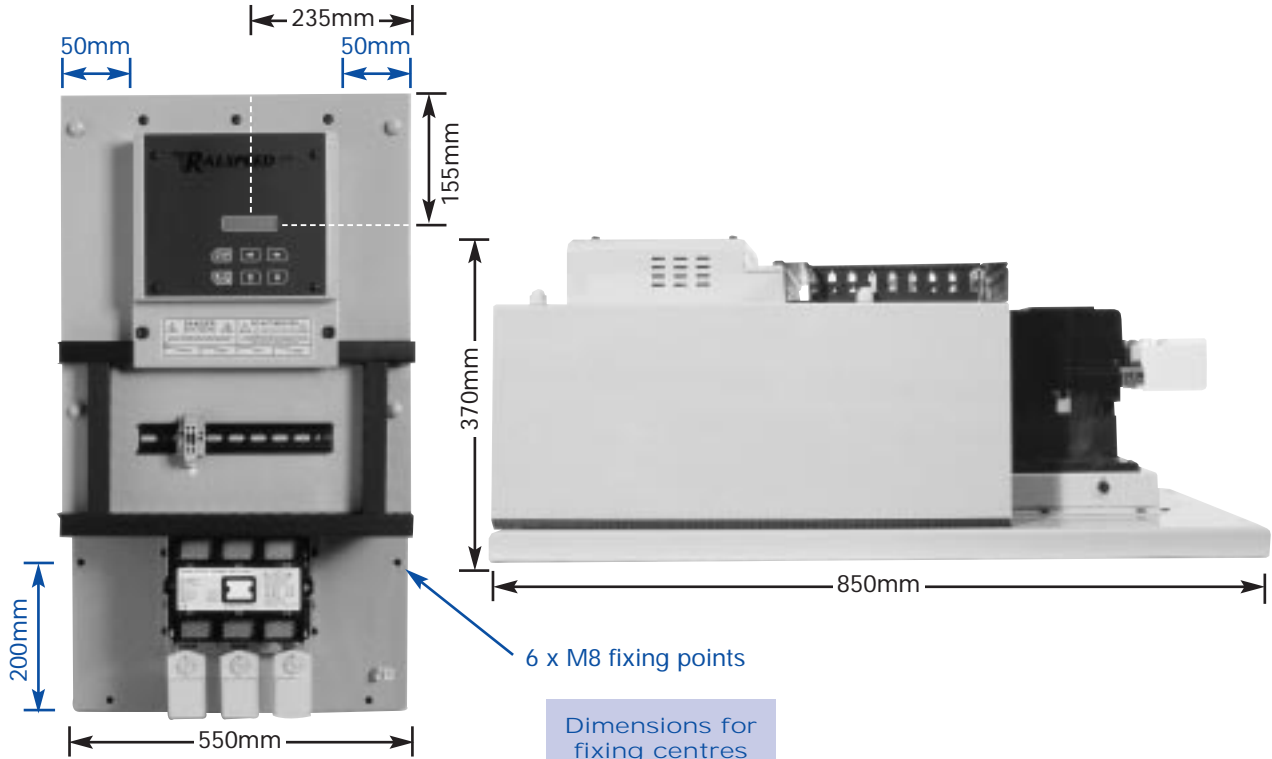
IP20 chassis version soft start unit for bypass duty, contactor to be supplied and fitted by Ralspeed



| Technical Data | Ratings | | | | |
|--|---|-----|-----|-----|-----|
| KW rating | 280 | 336 | 400 | 450 | 500 |
| Mains power (R, S, T) | 110vAC to 415vAC +10%-10% (690v available as standard option) | | | | |
| Current rating (Amps) at 380v | 510 | 620 | 710 | 800 | 900 |
| Control supply L1 & L2 (on PCB) | 110v / 220v / 440v User selectable and fully fused | | | | |
| Accel / Decel time – (Voltage ramp) | 1 to 240 seconds independently adjustable | | | | |
| Current limitation details | Max current limit 600% of full load current Ramp to limit 1-10 sec, Current time out 10-60 sec | | | | |
| Starting torque | 25% to 70% of mains voltage – 5% steps | | | | |
| Stopping torque | 25% to 100% of mains voltage – 5% steps | | | | |
| Torque boost (kick start) | 70% of mains voltage adjustable from 200ms to 2sec | | | | |
| Max switching cycle | 12 even starts per hour with override in engineers menu | | | | |
| Dimensions H x W x D (in mm) | 850 x 550 x 370 | | | | |
| Weights Kg (approximately & unpacked) | 45 | 45 | 45 | 45 | 45 |
| Power Terminals - (hole size in sq mm) | 10 | 10 | 10 | 10 | 10 |
| Ambient / Storage temperature | 0°C 45°C / -22°C 75°C | | | | |
| Programmable Relays | Overload, Underload, Thermistor, Service Over, Phase Fault, Firing Fault, External Trip, Overload Pre-alarm, Shearpin, Too many starts, Brake time over & Top of ramp | | | | |
| Programmable Inputs | Inch, Reset Run Hours, External Trip, Brake Stop, Ramp Hold, Start Delay, Soft Stop, Local/Remote, Em Stop, Reset & Heatsink over Temperature | | | | |
| Protection | Electronic Overload with 5 Selectable Curves, Underload, Thermistor Trip Circuit, Phase Fault, Thyristor Fault, Overload Pre-Alarm Too many starts, Emergency stop input & electronic "Shearpin" | | | | |
| Information Screens | Motor Running - Time & Date, Ambient Temperature, Motor Amps (both digital & bar graph), 1000 Event Data-log (Downloadable), Service Interval & Run Hours | | | | |

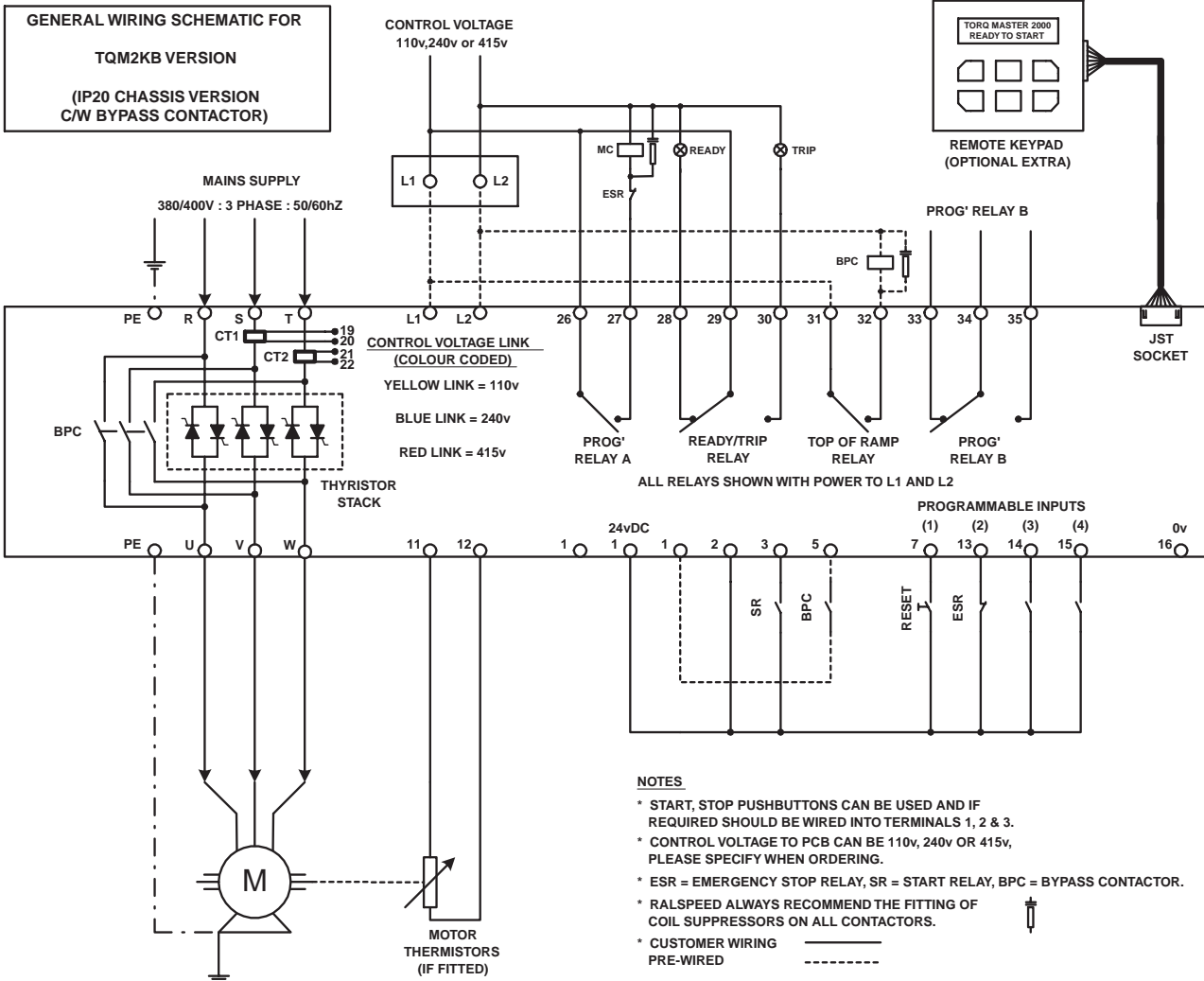
Note: Due to continuous improvement & development, sizes & specification may change without notice - always check with factory before ordering.

TQM2KB-280 to TQM2KB-500



Dimensions for fixing centres (blue text)

GENERAL WIRING SCHEMATIC FOR TQM2KB VERSION (IP20 CHASSIS VERSION C/W BYPASS CONTACTOR)



TQM2KC-11 to TQM2KC-500

IP54 version in sheet steel enclosure built to customer specification (IP65 available)



IP65 version in glass re-inforced plastic (GRP) enclosure also available, please ask for more details



Standard Ralspeed Specification Includes:

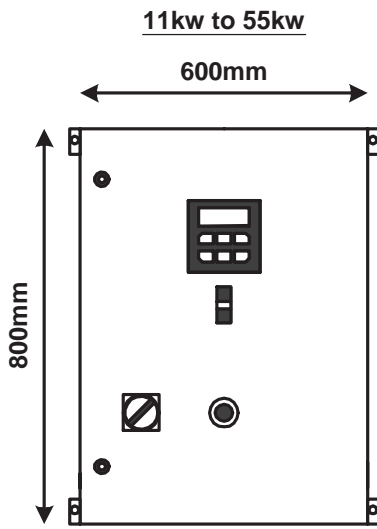
- * Load break door interlocked isolator
- * Main contactor
- * Bypass contactor
- * Emergency stop circuit & pushbutton
- * Start/stop/reset pushbuttons
- * Run indicator
- * Local/remote key switch
- * Door mounted keypad
- * Standard locking system

Other Optional Extras Include:

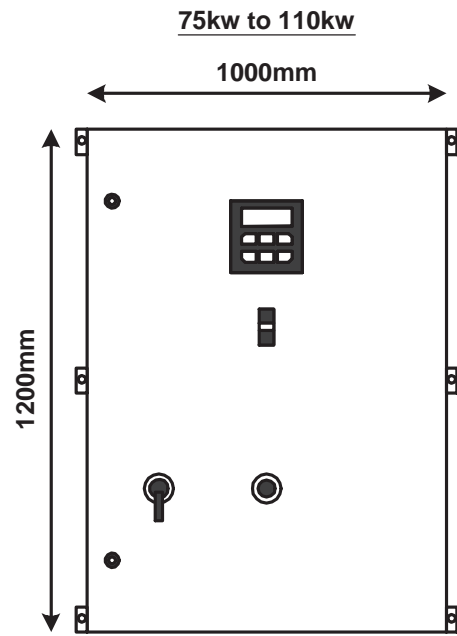
- * Door interlocked mccb c/w shunt trip
- * Door interlocked switch fuse
- * Door mounted analogue ammeter
- * Door mounted analogue voltmeter
- * Other various pushbuttons
- * Other various indicators
- * DOL override circuit
- * Viewing window for LCD display
- * Unique key locking system

PLEASE NOTE THAT THE ADDITION OF EXTRA SWITCHGEAR AND EQUIPMENT MAY ALTER THE FRAME SIZE OF THE STARTER

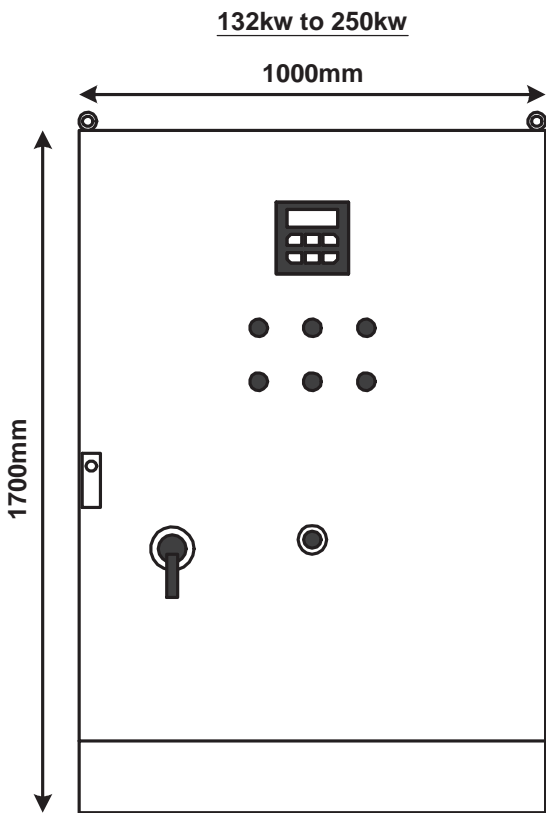
TQM2KC-11 to TQM2KC-500



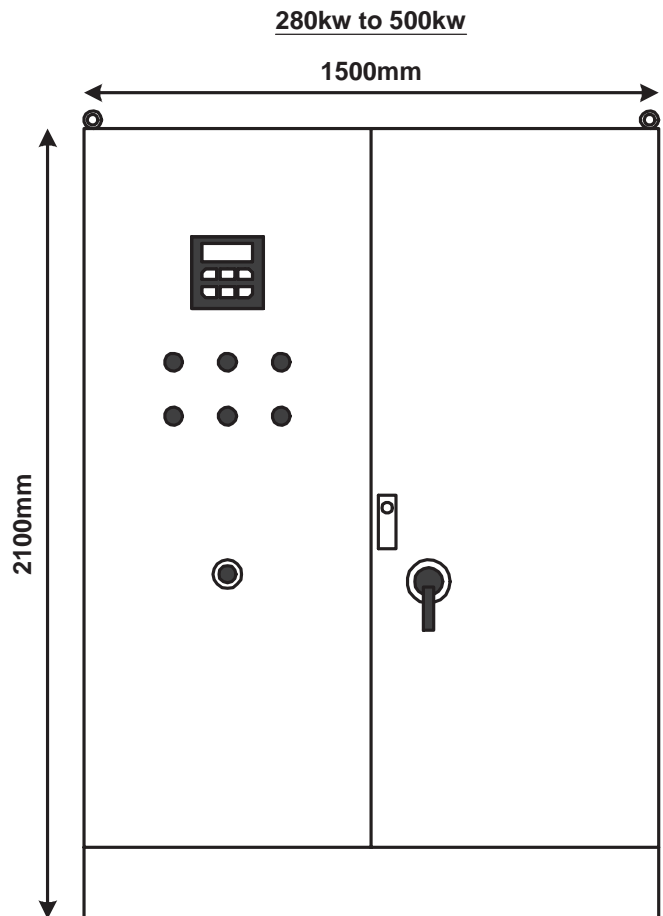
DEPTH = 250mm



DEPTH = 300mm



DEPTH = 400mm



DEPTH = 400mm